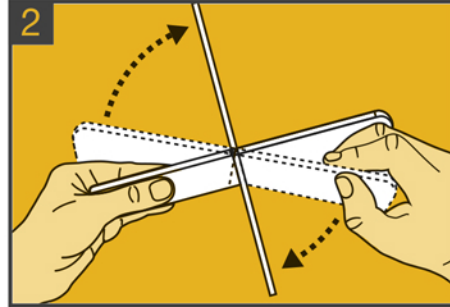
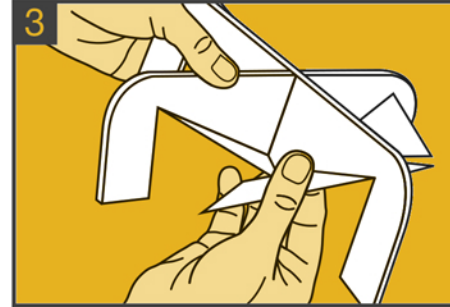


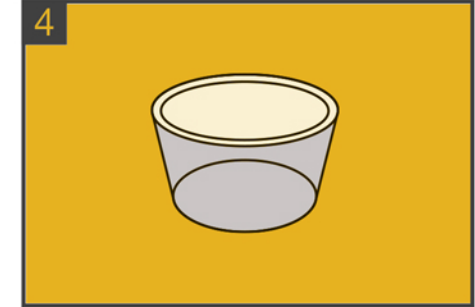
**1** STARTING AT THE NOTCH, TEAR OPEN THE TOP OF THE FOIL POUCH AND REMOVE THE COLLECTION DEVICE. (THE DEVICE HAS A STRONG ODOUR).



**2** HOLD THE FLAT URINE COLLECTION DEVICE AS SHOWN AND OPEN IT UP TO CREATE A CROSS SHAPE.



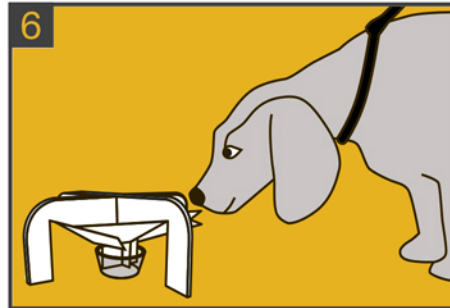
**3** FOLD THE FLAPS UPWARDS ALONG THE CREASES ON EACH OF THE FOUR SECTIONS (8 FLAPS IN TOTAL) TO CREATE A FUNNEL SHAPE.



**4** TAKE THE PLASTIC COLLECTION CUP (SUPPLIED SEPARATELY) AND PLACE IT SECURELY ON THE GROUND.



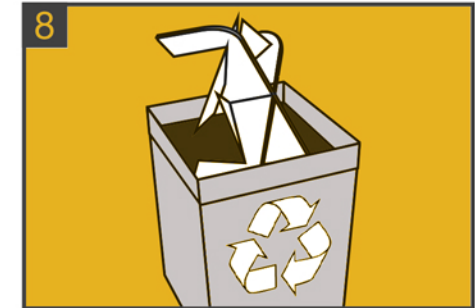
**5** ALIGN THE COLLECTION DEVICE OVER THE CUP AND INSERT THE CENTRAL FUNNEL SECTION INTO THE CUP.



**6** PRESENT THE DOG ON A LEAD TO THE COLLECTION DEVICE. THE DEVICE'S ODOUR WILL ENCOURAGE THE DOG TO URINATE ON IT.



**7** USING PROTECTIVE GLOVES REMOVE THE COLLECTION DEVICE AND RECOVER THE URINE SAMPLE IN THE COLLECTION CUP.



**8** HYGIECATCH IS FOR SINGLE USE ONLY. THE USED COLLECTION DEVICE IS SAFE FOR DISPOSAL IN STANDARD WASTE.